

MINI SWEEPER

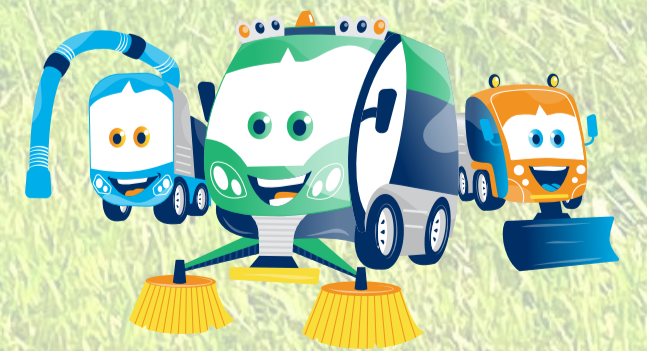
# LS175



***The "must-have" mini  
sweeper for your fleet***

 **Madvac**®

Sourcewell   **canoe** procurement group of canada awarded contract vendor



[www.madvac.com](http://www.madvac.com)

*Technical specs are subject to change without prior notice*

# Specifically designed to handle all the areas your large street sweeper can't access or manage

- Sidewalks
- Bike & pedestrian lanes
- Parking lots
- Curb side
- Alleys
- Pathways
- Alongside buildings
- Public markets



## LS175 is the ultimate sweep / vacuum / wash mobile cleaning unit for

- Cities and municipalities
- Outdoor cleaning contractors
- Airports & seaports
- Transit authorities
- Healthcare services
- Distribution centers
- Shopping malls
- Educational & sports facilities
- Manufacturing facilities
- Amusement parks
- Casinos
- Military
- Correctional facilities



# Key Attributes

- LS175 is the ONLY 48" wide closed cabin high-dump sweeper manufactured in North America. Everything is built according to North American standards;
- In the category 1.5 to 2 cu.yd. hopper capacity, LS175 is the lowest priced compact sweeper on the market;
- OEM spare parts shipped within 48 hours;
- 10 to 12 year lifespan will outlast most competitive models;



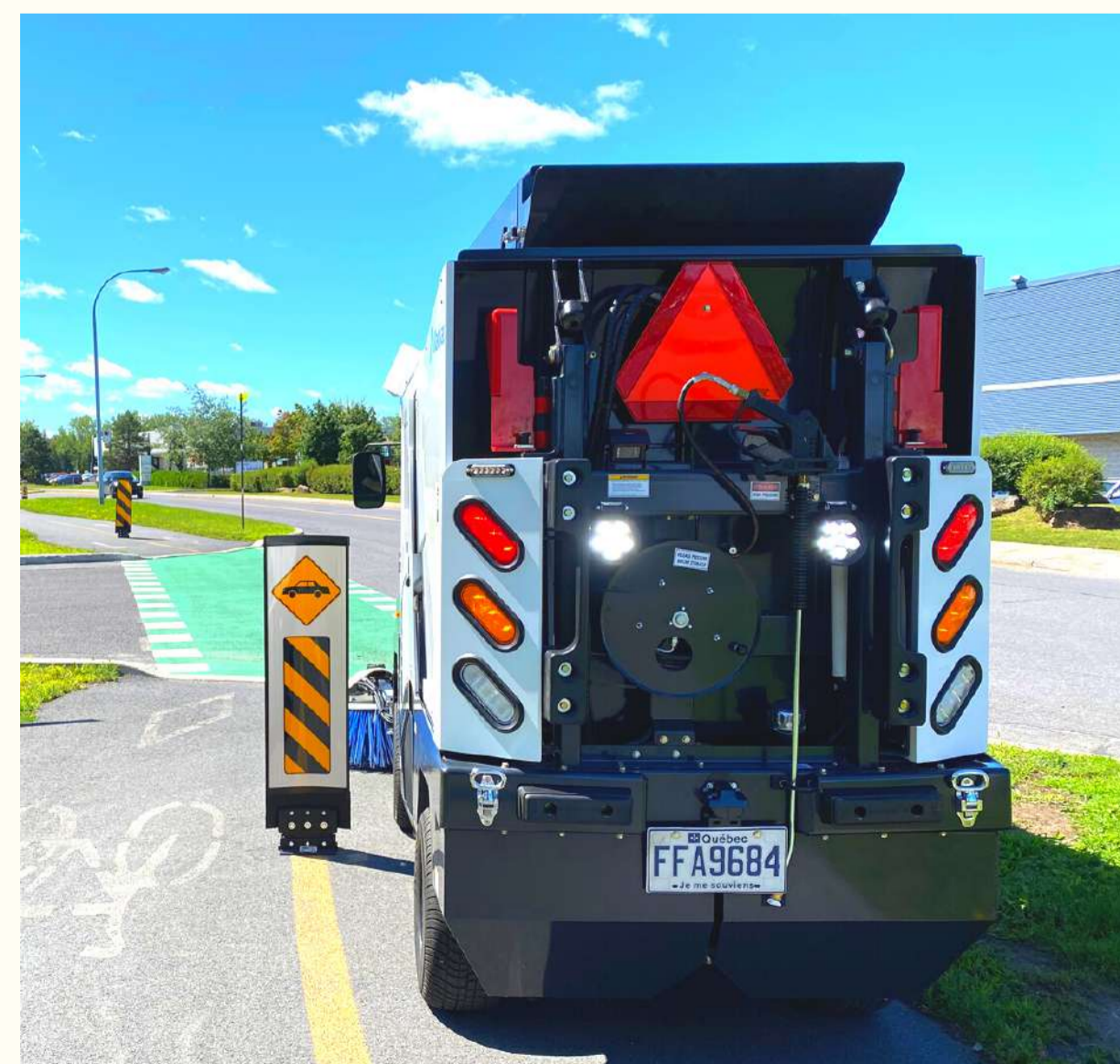
- A CDL is not required to operate this machine;
- Fully street legal lighting - safe and easy to use;
- For maintenance, LS175 offers unprecedented easy access to all critical components of the machine; (electrical box, manifolds, spool valves)
- Madvac has a 35+ years track record of success - when your machine is due for replacement we'll still be around.



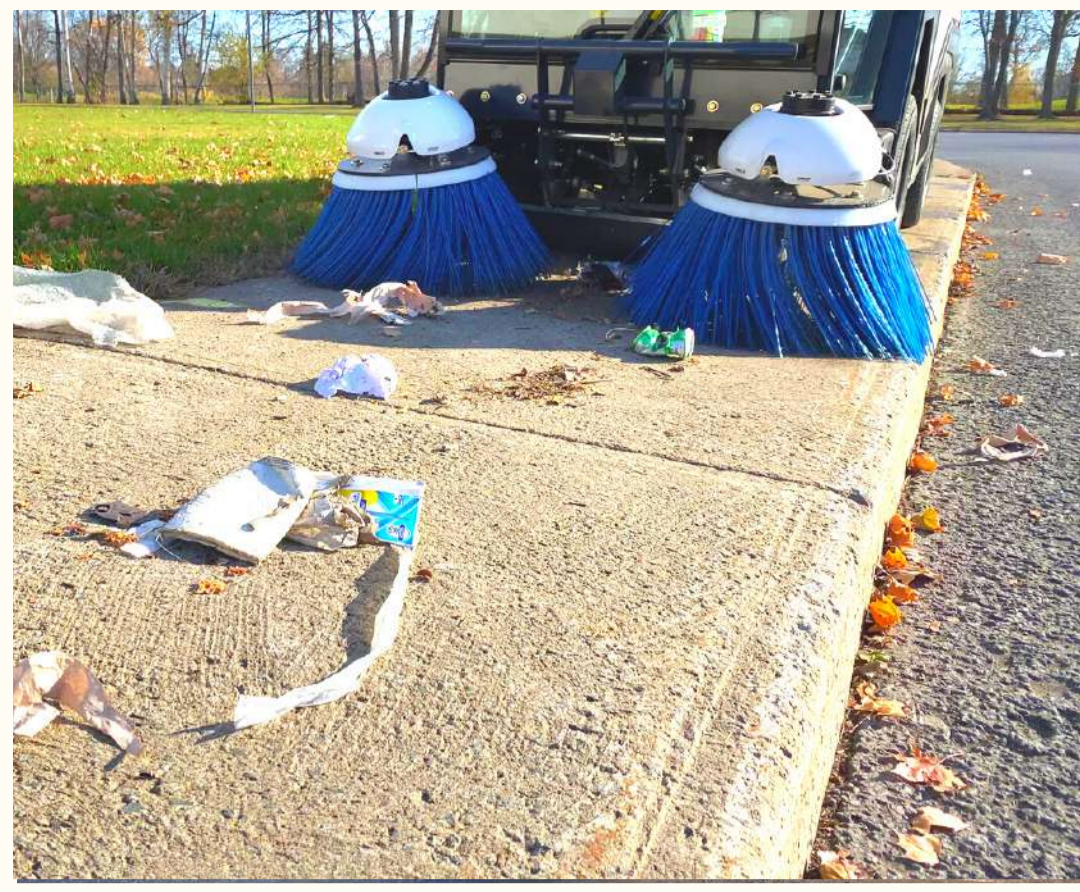
## Built to suit your needs

*Configure the LS175 according to your specific requirements*

- Stowed retractable wander hose
- Pressure washer gun
- Electric windshield defrost
- Heated mirrors
- Radio + CD + MP3 player system
- Fire extinguisher
- Tire flatproofing



**To request a quote [www.madvac.com](http://www.madvac.com)  
Diesel / Gas -> LS175 -> Request a quote**



# Madvac LS175 Data & Performance Information

## Capacities

Fuel tank	21.1 gal. (80 L)
Hydraulic system	23.7 gal. (90 L) ISO46
Litter capacity	1.75 cu. yd. (1.34 m <sup>3</sup> ) (353 gal.)

## Engine Data

Model	Hatz Tier 4 Final engine 3H50TIC 3 cyl. turbo with in-cab troubleshooting switch and light
-------	--

Displacement	91.54 cu. in. (1500 cc)
--------------	-------------------------

Gross rated power	58.5 HP (44.0 kW) @ 2800 RPM
-------------------	------------------------------

Air cleaner	Donaldson 2-stage filtration system
-------------	-------------------------------------

## Litter Collection System

Type	3-stage filtration process - water, rotary filter, bag (or cartridge)
------	---

Frame / body	Triangular frame tubing for engine 0.25" (6.35 mm) / 13 gauge fully welded / reinforced steel
--------------	---

Container material	Stainless steel
--------------------	-----------------

Dumping height	64 in. (1626 mm)
----------------	------------------

Container payload	2000 lbs (907 kg)
-------------------	-------------------

Power wash	Pressure washer 1800 psi (optional)
------------	-------------------------------------

## Vacuum System

Vacuum rating	2000 CFM
---------------	----------

Remote vacuum	4 in. (101 mm) X 15 ft. (4.57 m) stowed wander hose (optional)
---------------	--

## Traction

Drive	Rear wheel drive fully controlled by electric pedal
-------	---

Forward speed	15 mph (24 km/h)
---------------	------------------

Tires	Radial 225 R 12 on all 4 wheels
-------	---------------------------------

Brakes	Front hydraulic standard brakes; rear hydrostatic brakes; rear mechanical parking disk brakes
--------	---

Gradeability	11.3 deg. (20%)
--------------	-----------------

Curb weight	Dry 5500 lbs (2495 kg)
-------------	------------------------

## Suspension

Front	Two coil springs / heavy duty shock absorbers
-------	---

Rear	Two coil springs / heavy duty shock absorbers on axle
------	---

## Sweep Gear

Brushes	Two brushes (independently joystick controlled) 25 in. (635 mm) diameter each polypropylene
---------	---

Sweeping width	From 44 in. (1118 mm) to 80 in. (2032 mm)
----------------	---

Pickup nozzle	Electric raise/lower with polymer skate and wheels
---------------	--

Brush speed	0 RPM to 150 RPM
-------------	------------------

Brush arm	Floating and adjustable
-----------	-------------------------

In-cab	Brush speed & down pressure
--------	-----------------------------

## Electrical

Lighting	2 headlights; 2 hazard lights; 4 work lights; 4 strobe lights; side panel light; brakes, turn, reverse signals, SMV sign
----------	--

Instruments	Hour meter, fuel gauge, no water indicator, brake indicator, left turn signal, engine oil indicator, battery indicator, engine temperature indicator, right turn signal, glow plug indicator, engine maintenance required
-------------	---

## Cab

Cab	200-degree cab vision
-----	-----------------------

Windshield	Full windshield laminated glass
------------	---------------------------------

Windows	Full ventilation, pivoting side windows that open each side
---------	---

Light	Interior dome light
-------	---------------------

Heating / AC	HVAC unit
--------------	-----------

Defrost	Windshield heated micro filament (optional) Heated mirrors (optional)
---------	--

Seat	Adjustable suspended air seat with 2-point seat belt
------	--

## Dimensions

Width	48 in. (1219 mm)
-------	------------------

Length	136 in. (3454 mm)
--------	-------------------

Height	86 in. (2184 mm) with bag filtration system 88 in. (2235 mm) with cartridge filtration system
--------	--

Wheelbase	65 in. (1651 mm)
-----------	------------------

Ground clearance	8.5 in. (216 mm)
------------------	------------------

## Hydraulic System

Drive system	Heavy duty hydrostatic drive with infinite movement engine following RPM with anti-stall
--------------	--



Proud manufacturer of the Madvac product line

### Telephone:

- 1-855-651-0444 (toll free - US/Canada)
- 1-450-651-0444 (international)

Fax: 450-651-0447

Email: [info@exprolink.com](mailto:info@exprolink.com)

Address: 2170 Rue de la Province, Longueuil QC, Canada J4G 1R7

Website: [www.madvac.com](http://www.madvac.com)

Sourcewell (US) and Canoe (Canada) contract vendor number: **093021-EXP**