



ELECTRIC ALL-TERRAIN LITTER VACUUM

# LR50 VEV

*Lithium battery pack with up to 9 hours autonomy*

 **Madvac**®



Sourcewell   
Formerly NJPA

 **canoe**  
procurement group of canada

awarded contract vendor

[www.madvac.com](http://www.madvac.com)



# From concrete to grass, the electric LR50 can tackle all types of urban terrain with ease

- Parks
- Sidewalks
- Bike & pedestrian lanes
- Parking lots
- Curb side
- Alleys
- Pathways
- Alongside buildings



Ergonomic 6-position robotic joystick allows effortless displacement of the boom

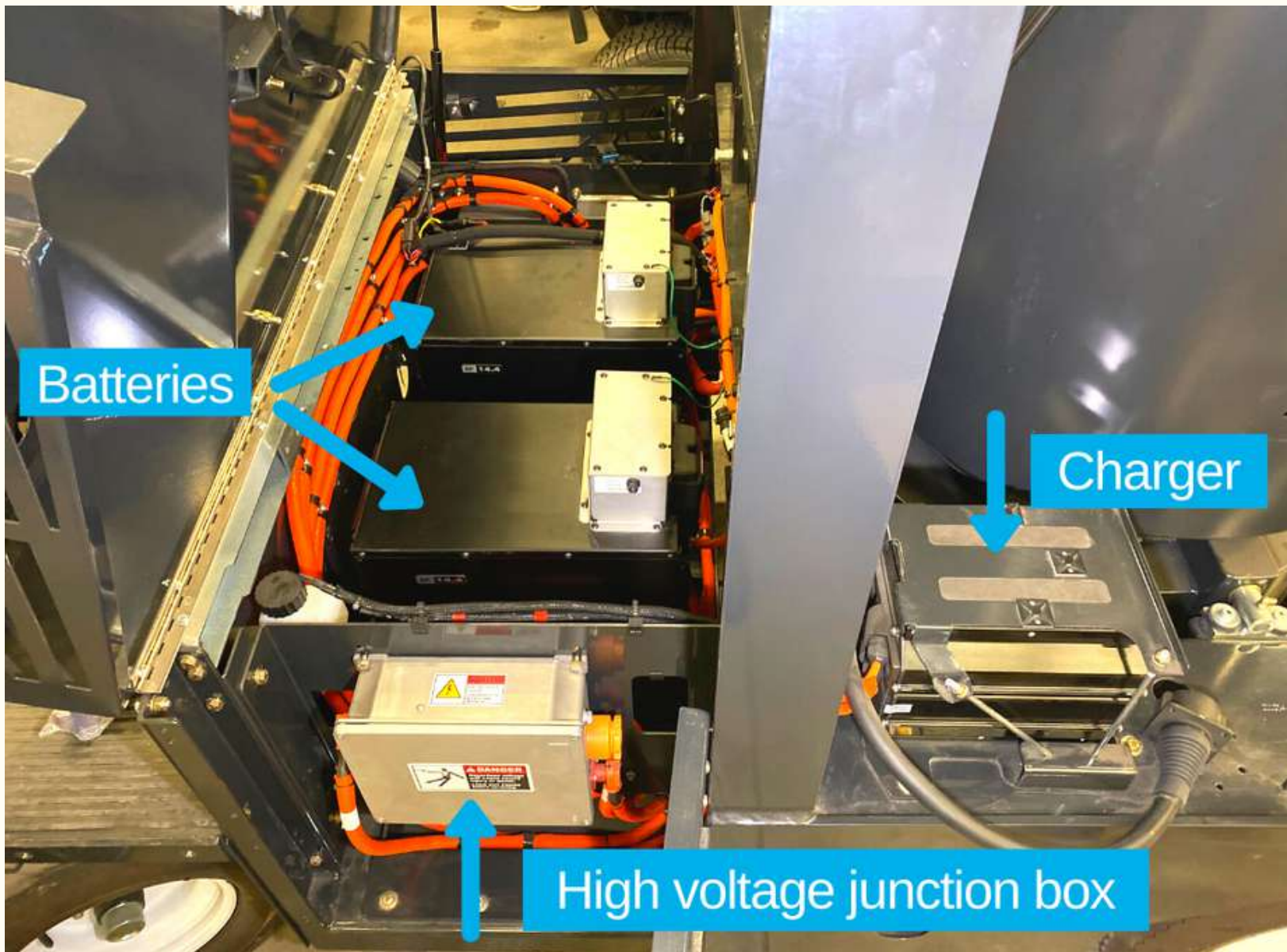


## LR50 is the perfect all-terrain litter solution for

- Cities & municipalities
- Outdoor cleaning contractors
- Airports & seaports
- Transit authorities
- Healthcare services
- Distribution centers
- Shopping malls
- Educational & sports facilities
- Manufacturing facilities
- Amusement parks
- Casinos
- Military
- Correctional facilities







## Built to suit your needs

*Configure the LR50 according to your specific requirements*

- 48 in. (1219 mm) vacuum head
- Retractable wander hose
- Litter collector bags or bagless debris system (Kevlar bin)
- Water mist system (additional dust control)
- Enclosed cab with heated or non-heated windshield and vinyl doors
- Heated seat
- Fan for operator comfort
- Rear-view camera
- Tire flatproofing
- Fire extinguisher

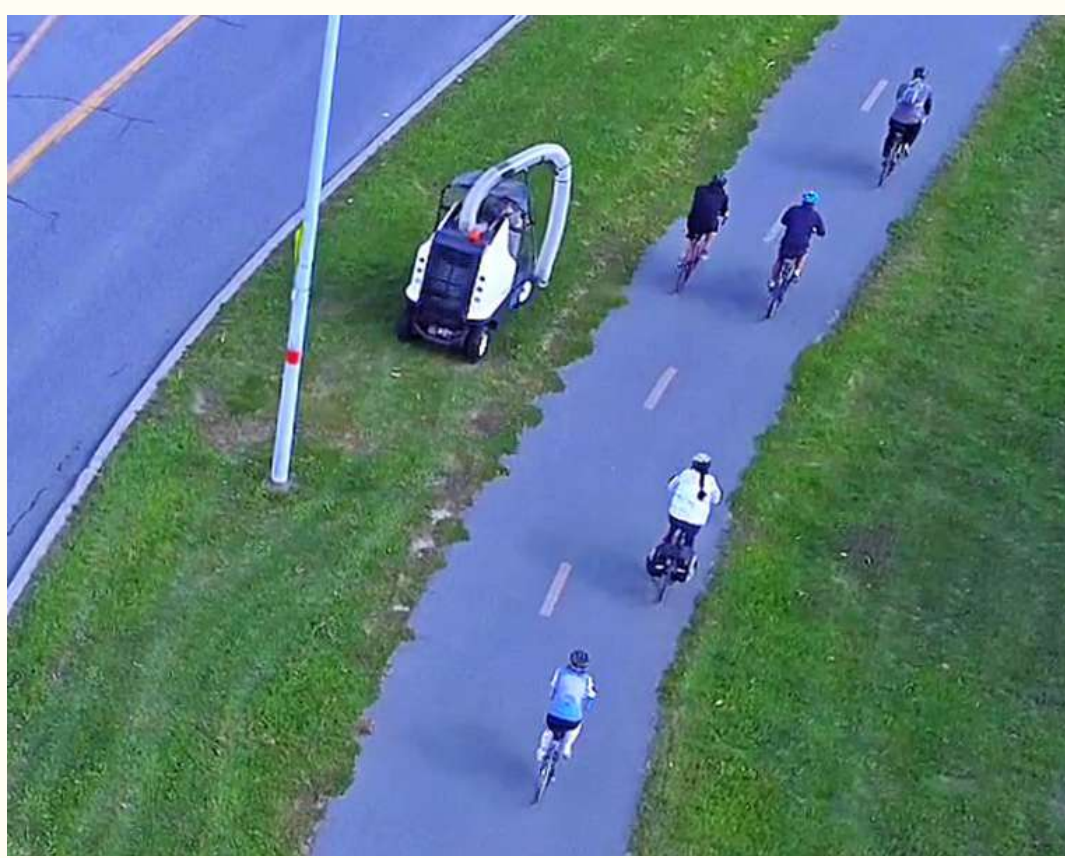


## Key Attributes

- LR50 has one of the best compact battery models on the market: Lithium-Ion nickel manganese cobalt (Li NMC) from Zero Motorcycles providing up to 9 hours of autonomy and 3x better "energy per weight and volume" ratio in the industry;
- Approx. 15% lower dB than LR50 diesel model;
- Closed cabin (vinyl doors) with climate control options for operator comfort;
- Robotic vacuum arm with 6-position joystick makes litter picking easy and injury free;
- Productivity 6x faster than manual litter picking;
- Collects litter dry, humid or wet;
- Effortless litter removal using optional 48 in. (1219 mm) wide vacuum head;
- Optional 15 ft. (4.57 m) retractable wander hose for hard-to-reach areas;
- A CDL permit is not required to operate this machine;
- Fully street legal lighting;
- 8 to 10 year lifespan;
- OEM spare parts shipped within 48 hours;
- Madvac has a 35+ years track record of success – when your machine is due for replacement we'll still be around.







# Madvac LR50 VEV<sup>+</sup>

## Data & Performance Information

### Power

|                |   |
|----------------|---|
| Power pack     | Lithium-Ion nickel manganese cobalt (Li NMC) high energy capacity, up to 28.8 kWh |
| Voltage        | 104 volts battery pack (2 batteries)  |
| Charger        | On board charger 6kW  |
| Charger outlet | J1772 level 2, 240V/24A   |
| Charging time  | 5 hours (15-18 h if 120-v wall socket)  |
| Autonomy       | Up to 9 hours   |

### Litter Collection System

|                        |   |
|------------------------|---|
| Type                   | Straight-through system compacts litter at 2:1 ratio                  |
| Litter capacity        | 75 gal. (284 L)   |
| Container construction | 16 gauge powder-coated steel  |
| Vacuum hose            | 7 in. (178 mm)  |
| Wander hose            | Diameter: 6 in. (152 mm); length: 15 ft. (4.57 m)                     |
| Bagless system         | Optional Kevlar bin can be filled and emptied into off-the-shelf bags |

### Frame and Body

- Heavy gauge steel body on a welded 1/4 in. (6.35 mm) structural steel frame
- Electrostatic powder-coated paint

### Dimensions (\*base model)

|                  |                   |
|------------------|-------------------|
| Width            | 48 in. (1219 mm)  |
| Length           | 99 in. (2515 mm)  |
| Height           | 100 in. (2540 mm) |
| Wheelbase        | 69 in. (1753 mm)  |
| Ground clearance | 10 in. (254 mm)   |

### Vacuum System

|               |                |
|---------------|----------------|
| Vacuum rating | Up to 1800 CFM |
|---------------|----------------|

### Controls

|            |  |
|------------|--|
| Steering   | Power assisted                                 |
| Propulsion | Forward, neutral, reverse; push button shifter |

### Traction

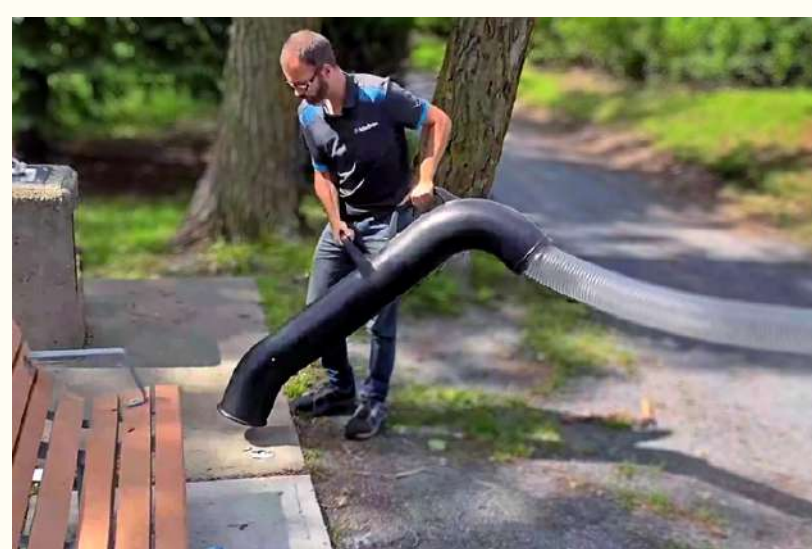
|                      |  |
|----------------------|--|
| Drive                | Propulsion with 17 to 1 ratio                          |
| Forward speed        | 12 mph (20 km/h)                                       |
| Tires (all 4 wheels) | Regular 20.5 in. (521 mm); Turf 20 in. (508 mm)        |
| Brakes               | Drum service brakes with electromagnetic parking brake |
| Gradeability         | 11.3 degree (20%)                                      |
| Curb weight          | 2716 lbs (1232 kg)                                     |

### Suspension

|       |             |
|-------|-------------|
| Front | Leaf spring |
| Rear  | Leaf spring |

### dB Rating (front)

|              |       |
|--------------|-------|
| Cabin        | 85 dB |
| 10 feet away | 71 dB |



Proud manufacturer of the Madvac product line

#### Telephone:

- 1-855-651-0444 (toll free - US/Canada)
- 1-450-651-0444 (international)

**Fax:** 450-651-0447

**Email:** info@exprolink.com

**Address:** 2170 Rue de la Province

Longueuil QC  
Canada J4G 1R7

**Website:** [www.madvac.com](http://www.madvac.com)

**Sourcwell** (US) and **Canoe**

(Canada) contract vendor

number: **093021-EXP**

*Technical specs are subject to change without prior notice*