



ELECTRIC ALL-TERRAIN LITTER VACUUM

LN50 VEV

Lithium battery pack with up to 9 hours autonomy

 **Madvac**®

Sourcewell 
Formerly NJPA

 **canoe**
procurement group of canada

awarded contract vendor

www.madvac.com



From concrete to grass,
the electric LN50 can tackle all
types of urban terrain with ease

- Parks
- Sidewalks
- Bike & pedestrian lanes
- Parking lots
- Curb side
- Alleys
- Pathways
- Alongside buildings

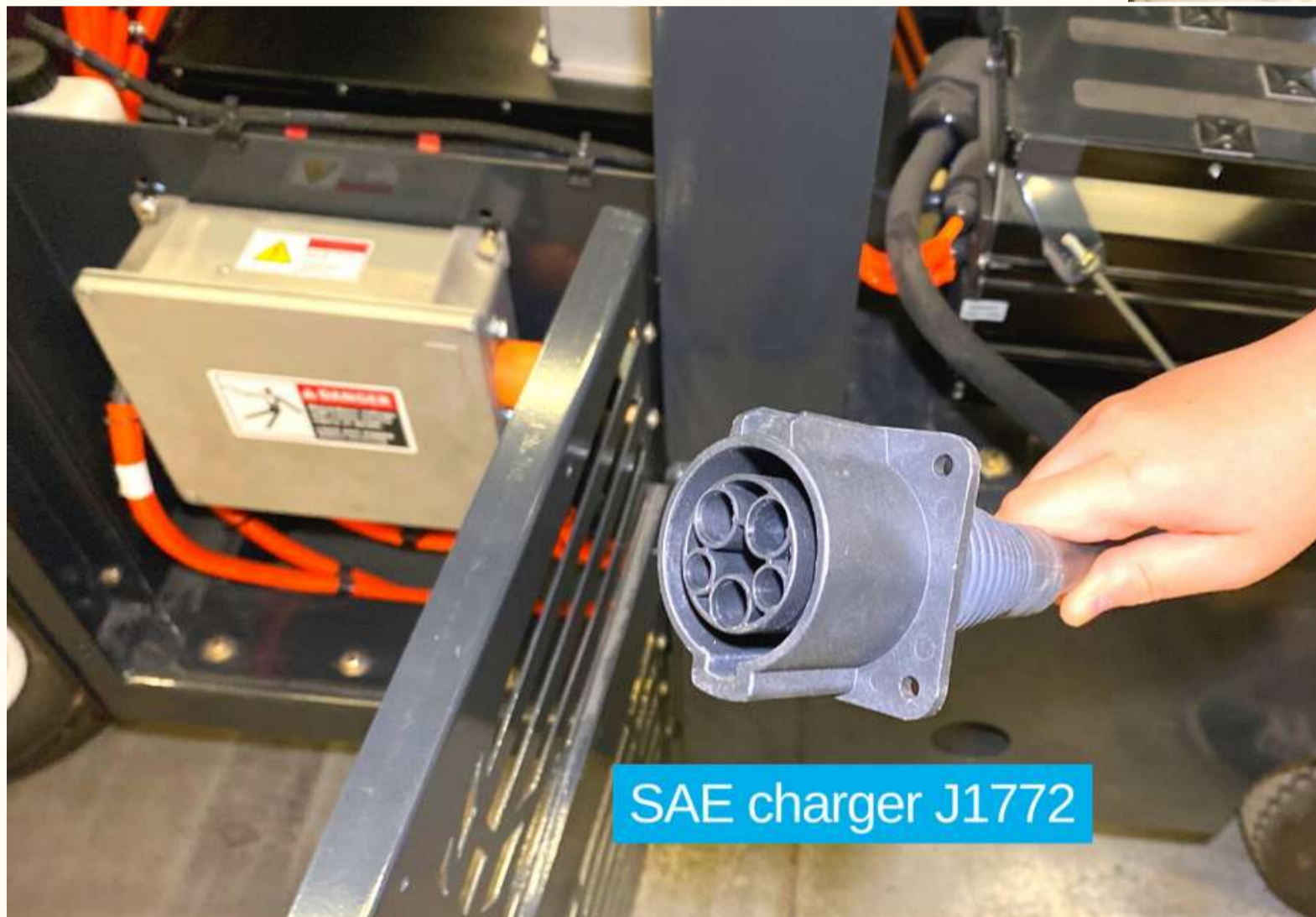
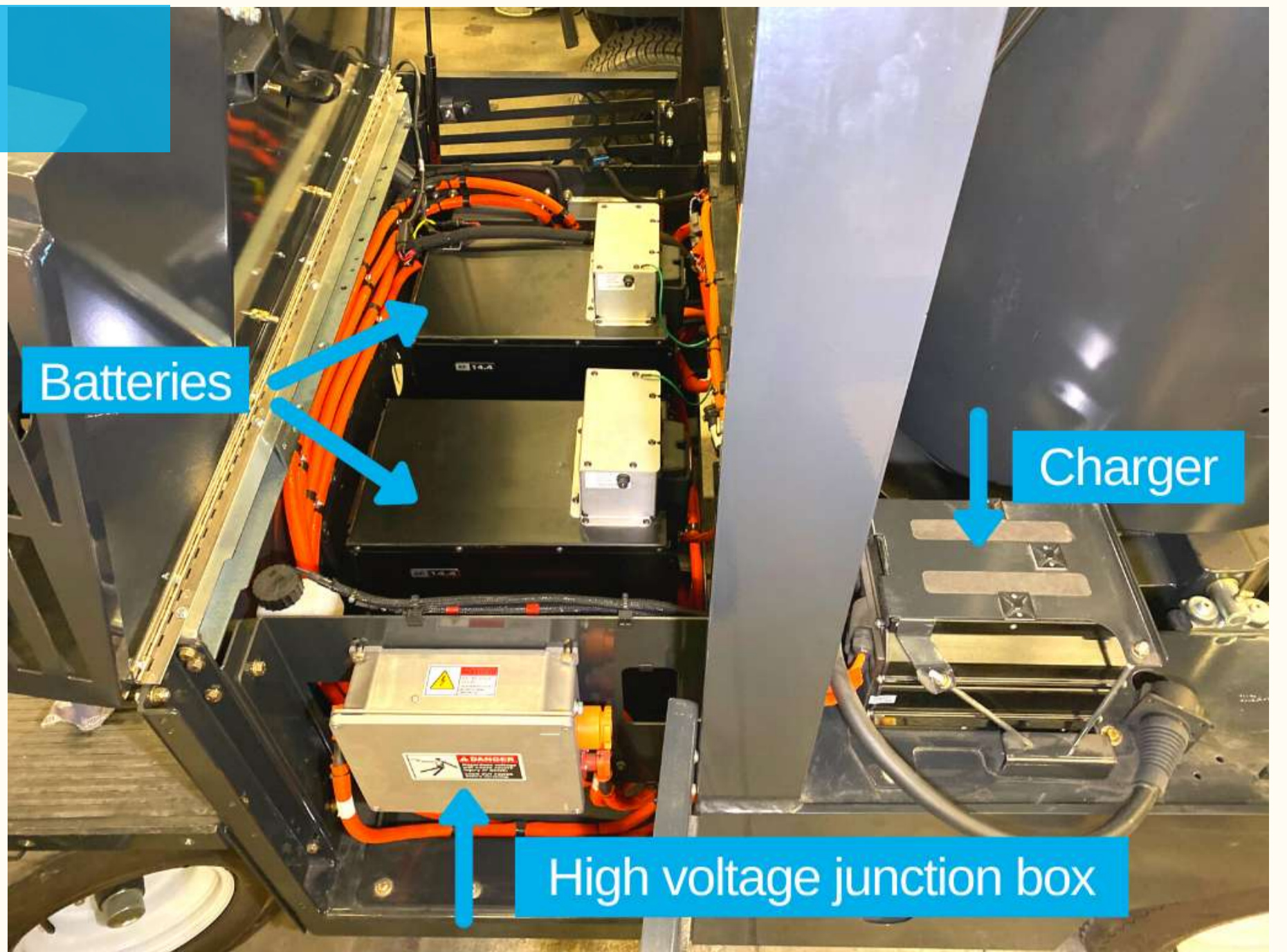
LN50 is the
perfect all-
terrain litter
solution for

- Cities & municipalities
- Outdoor cleaning contractors
- Airports & seaports
- Transit authorities
- Healthcare services
- Distribution centers
- Shopping malls
- Educational & sports facilities
- Manufacturing facilities
- Amusement parks
- Casinos
- Military
- Correctional facilities



Key attributes

- LN50 runs using one of the best compact battery models on the market - Lithium-Ion nickel manganese cobalt (Li NMC), providing up to 9 hours of autonomy and 3 times better "energy per weight and volume" ratio in the industry;
- Significant noise reduction compared to diesel model - operator dB 85;
- LN50 is the closest equivalent to the now-discontinued Tennant ATLV 4300;
- Collects litter dry, humid or wet with productivity 6 times faster than manual litter picking;



- Effortless litter removal using 48 in. (1219 mm) wide vacuum head;
- 15 ft. (4.57 m) retractable wander hose for confined, hard-to-reach areas;
- A CDL permit is not required to operate this machine;
- Fully street legal lighting;
- 10 to 12 year lifespan;
- OEM spare parts shipped within 48 hours;
- Madvac has a 30+ years track record of success - when your machine is due for replacement we'll still be around.

Built to suit your needs

Configure the LN50 according to your specific requirements

- 48 in. (1219 mm) vacuum head
- Retractable wander hose
- Litter collector bags or bagless debris system (Kevlar bin)
- Water mist system (additional dust control)
- Overhead sunshield roof
- Heated seat
- Tire flatproofing
- Fire extinguisher





Madvac LN50 VEV

Data & Performance Information

Power

| | |
|----------------|--|
| Power pack | Lithium-Ion nickel manganese cobalt (Li NMC) high energy capacity, up to 28.8 kw/h |
| Voltage | 102 volts battery packs (2) |
| Charger | Integrated chargers 6kW on board |
| Charger outlet | J1772 level 2, 240V/24A |
| Charging time | 5 hours (15-18 h if 120-v wall socket) |
| Autonomy | Up to 9 hours |

Litter Collection System

| | |
|------------------------|--|
| Type | Straight-through system compacts litter at 2:1 ratio |
| Litter capacity | 75 gal. (284 L) |
| Container construction | 16 gauge powder-coated steel |
| Vacuum hose | 7 in. (178 mm) |
| Wander hose | Diameter: 6 in. (152 mm); length: 15 ft. (4.57 m) |
| Bagless system | Kevlar bin can be filled and emptied into off-the-shelf bags |

Frame and Body

- Heavy gauge steel body on a welded 1/4 in. (6.35 mm) structural steel frame
- Electrostatic powder-coated paint

Dimensions

| | |
|------------------|------------------|
| Width | 48 in. (1219 mm) |
| Length | 96 in. (2438 mm) |
| Height | 92 in. (2337 mm) |
| Wheelbase | 69 in. (1753 mm) |
| Ground clearance | 10 in. (254 mm) |

Vacuum System

| | |
|---------------|----------------|
| Vacuum rating | Up to 1800 CFM |
|---------------|----------------|

Controls

| | |
|------------|--|
| Steering | Power assisted |
| Propulsion | Forward, neutral, reverse; push button shifter |

Traction

| | |
|----------------------|---|
| Drive | Propulsion with 17 to 1 ratio |
| Forward speed | 12 mph (19 km/h) |
| Tires (all 4 wheels) | Regular 20.5 in. (521 mm); Turf 20 in. (508 mm) |
| Brakes | Drum service brakes with magnetic parking brake |
| Gradeability | 11.3 degree (20%) |
| Curb weight | 2356 lbs (1069 kg) |

Suspension

| | |
|-------|-------------|
| Front | Leaf spring |
| Rear | Leaf spring |

dB Rating (front)

| | |
|--------------|-------|
| Cabin | 85 dB |
| 10 feet away | 71 dB |



Proud manufacturer of the Madvac product line

Telephone:

- 1-855-651-0444 (toll free - US/Canada)
- 1-450-651-0444 (international)

Fax: 450-651-0447

Email: info@exprolink.com

Address: 2170 Rue de la Province
Longueuil QC
Canada J4G 1R7

Website: www.madvac.com

Sourcwell (US) and **Canoe** (Canada) contract vendor
number: **093021-EXP**

Technical specs are subject to change without prior notice